

# Assessment of the fetal thymus gland using the eL18-4 PureWave linear array transducer

eL18-4 PureWave linear array transducer

### Category

Fetal thymus gland

### Authors

Carole Gravino, RDMS, Laura Vazquez, RDMS, Joshua Copel, MD  
Yale-New Haven Hospital

### Overview

Diagnostic ultrasound is routine in pregnancy to rule out structural abnormalities. In the setting of cardiac disease, the thymus gland should be evaluated.

### Patient history

A 30-year-old, healthy pregnant woman at 18 weeks 1 day gestation was evaluated during a routine anatomical survey.

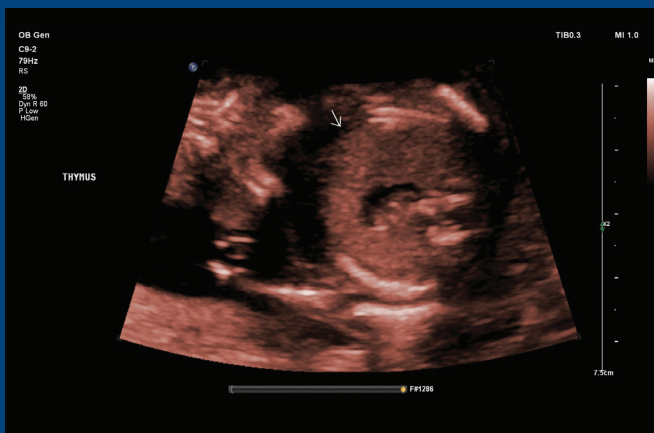
### Protocol

With a BMI of 23, this patient was a candidate for assessment of the fetal thymus gland. Both the curved C9-2 and the linear eL18-4 transducers were used.

Although the thymus gland is visualized with the C9-2, the eL14-8 enhanced the borders of the gland for better visualization.



**The Philips eL18-4 PureWave linear array transducer is our first high-performance transducer featuring ultra-broadband PureWave crystal technology with multi-row array configuration, allowing for fine-elevation focusing capability.**



**Figure 1** The thymus gland is identified by the arrow using the C9-2 transducer. Notice the borders are difficult to visualize.



**Figure 2** The thymus gland is identified by the arrow using the eL18-4 transducer. The gland is enhanced and the borders are well visualized.

## Conclusion

This clinical case shows enhanced visualization of the thymus gland. Thymic hypoplasia and thymic aplasia have been reported as an association with 22q.11.2 deletion (DiGeorge syndrome). The eL14-8 linear transducer clearly enhances visualization of the gland.

## Reference

- 1 Lee W and Van Den Veyver I. "22q11.2 Deletion Syndrome." In *Obstetric Imaging: Fetal Diagnosis and Care*. Ed. Joshua Copel. Atlanta, GA: Elsevier Inc.; 2018.
- 2 Zuckerwise L, Li L and Copel JA. "Thymus." In *Obstetric Imaging: Fetal Diagnosis and Care*. Ed. Joshua Copel. Atlanta, GA: Elsevier Inc.; 2018.

Results from case studies are not predictive of results in other cases. Results in other cases may vary.

